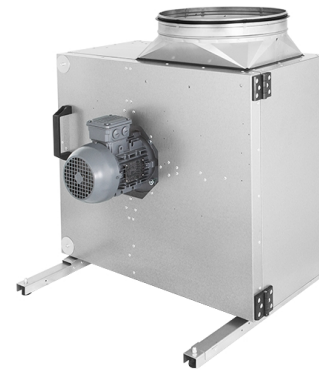
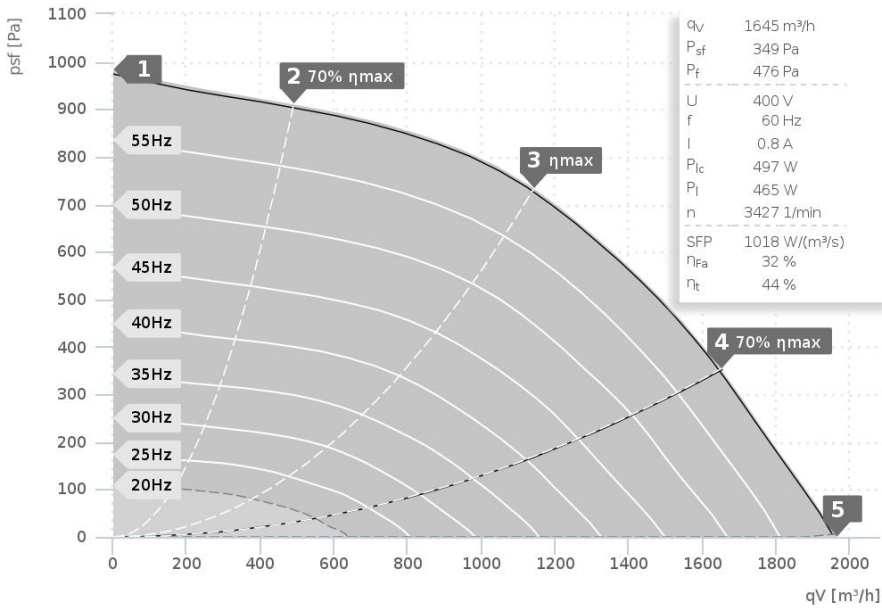


DATA SHEET

MPS 225 D2 30 | 140710



- Max. medium temperature 120°C
- Motor outside of air stream
- Speed controllable
- Swing-out fan unit
- With condensate and grease drain
- Star-Delta operation possible
- Star: direct 400V 3~ grid or frequency converter with 400V output
- Delta: direct 230V 3~ grid or frequency converter with 230V 1~ input and 230V 3~ output

— ErP compliant range

Operating Point		1	2	3	4	5
Current I	A	0,6	0,7	0,9	0,9	0,8
Power consumption P ₁	W	239	368	475	471	416
RPM n	1/min	3521	3476	3437	3443	3470
SPL inlet L _{WA5}	dB(A)	82	81	79	83	85
SPL outlet L _{WA6}	dB(A)	84	83	83	87	88
SPL casing break out L _{WA2}	dB(A)	76	76	74	75	76

Sound power (L _W) dB(A)		Medium Frequency Band								
		Σ	63	125	250	500	1k	2k	4k	8k
Inlet	L _{WA5}	83	51	62	70	79	77	75	75	66
Outlet	L _{WA6}	86	46	65	69	83	78	80	77	69
Casing	L _{WA2}	75	51	62	62	68	69	70	66	57

MPS 225 D2 30 140710	
Voltage U _N	400 V 3~
Current I _{max}	0,9 A
Ambient temperature t _A	60 °C
Medium temperatures t _M	120 °C
Speed Control	f
Motor protection	-
Insulation class motor	F
Weight	29,3 kg
Poles	2
IP motor	IP55
IP terminal box	-
Min. operating temperature	-20 °C

